


Chrome File Edit View History Bookmarks People Tab Window Help

Mumble - Installing Mumble On x +

mumble.com/support/mumble-server-install-on-mac.php

## Installing Mumble On Mac

1. Download Mumble  
Download the Mumble file for Mac at the following link:  
[Mumble 1.3.3](#)
2. Drag the Icon  
Double click on the .dmg and drag the Mumble icon into the Applications folder



The diagram shows a window titled 'Mumble 1.2.4' containing a 'Mumble' icon (a headset with 'IBLE' on it) and an 'Applications' folder icon. A large red arrow points from the Mumble icon to the Applications folder icon, which is circled in red.

3. Run From Applications  
Click on Applications in Finder and Mumble will be in the list. Double click the Icon to run.

mumble-1.3.3.dmg





**"Mumble" is an application downloaded from the Internet. Are you sure you want to open it?**

Google Chrome downloaded this file today at 21:55 from [www.mumble.com](http://www.mumble.com).



Cancel

Show Web Page

Open



Mumble



Applications



## Audio Tuning Wizard

### Introduction

Welcome to the Mumble Audio Wizard

---

This is the audio tuning wizard for Mumble. This will help you correctly set the input levels of your sound card, and also set the correct parameters for sound processing in Mumble.

Please be aware that as long as this wizard is active, audio will be looped locally to allow you to listen to it, and no audio will be sent to the server.

---

< Back

Next >

Cancel

Audio Tuning Wizard

Device selection

Selecting the input and output device to use with Mumble.

Input Device

This is the device your microphone is connected to.

System

CoreAudio

Device

Default Device

☐ Use echo cancellation

Output Device

This is the device your speakers or headphones are connected to.

System

CoreAudio

Device

Default Device

☒ Enable positional audio

☐ Attenuate applications while other users talk

< Back

Next >

Cancel

## Audio Tuning Wizard

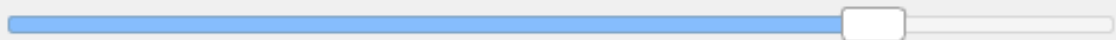
### Device tuning

Changing hardware output delays to their minimum value.

---

To keep latency to an absolute minimum, it's important to buffer as little audio as possible on the soundcard. However, many soundcards report that they require a much smaller buffer than what they can actually work with, so the only way to set this value is to try and fail.

You should hear a voice sample. Change the slider below to the lowest value which gives **no** interruptions or jitter in the sound. Please note that local echo is disabled during this test.

 50 ms

---

< Back

Next >

Cancel

## Audio Tuning Wizard

### Volume tuning

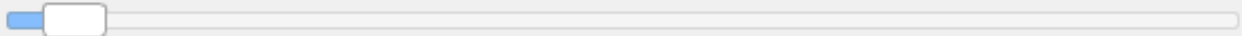
Tuning microphone hardware volume to optimal settings.

Open your sound control panel and go to the recording settings. Make sure the microphone is selected as active input with maximum recording volume. If there's an option to enable a "Microphone boost" make sure it's checked.

Speak loudly, as when you are annoyed or excited. Decrease the volume in the sound control panel until the bar below stays as high as possible in the blue and green but **not** the red zone while you speak.



Now talk softly, as you would when talking late at night and you don't want to disturb anyone. Adjust the slider below so that the bar moves into green when you talk, but stays blue while you're silent.



☐ Use high contrast graphics

< Back

Next >

Cancel

## Audio Tuning Wizard

### Voice Activity Detection

Letting Mumble figure out when you're talking and when you're silent.

This will help Mumble figure out when you are talking. The first step is selecting which data value to use.

☒ Push To Talk:

☐ Raw amplitude from input

☐ Signal-To-Noise ratio



Next you need to adjust the following slider. The first few utterances you say should end up in the green area (definitive speech). While talking, you should stay inside the yellow (might be speech) and when you're not talking, everything should be in the red (definitively not speech).

< Back

Next >

Cancel



## Audio Tuning Wizard

### Quality & Notifications

Adjust quality and notification settings.

#### Quality settings

- ☐ Low In this configuration Mumble will use a **low amount of bandwidth**. This will inevitably result in high latency and poor quality. Choose this only if your connection cannot handle the other settings. (16kbit/s, 60ms per packet)
- ☒ Balanced This is the **recommended default** configuration. It provides a good balance between quality, latency, and bandwidth usage. (40kbit/s, 20ms per packet)
- ☐ High This configuration is only recommended for use in setups where bandwidth is not an issue, like a LAN. It provides the lowest latency supported by Mumble and **high quality**. (72kbit/s, 10ms per packet)

#### Notification settings

- ☐ Use Text-To-Speech to read notifications and messages to you.
- ☒ Disable Text-To-Speech and use sounds instead.

< Back

Next >

Cancel



## Audio Tuning Wizard

### Positional Audio

Adjusting attenuation of positional audio.

Mumble supports positional audio for some games, and will position the voice of other users relative to their position in game. Depending on their position, the volume of the voice will be changed between the speakers to simulate the direction and distance the other user is at. Such positioning depends on your speaker configuration being correct in your operating system, so a test is done here.

The graph below shows the position of **you**, the **speakers** and a **moving sound source** as if seen from above. You should hear the audio move between the channels.

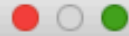
☐ Use headphones



< Back

Next >

Cancel



## Audio Tuning Wizard

Finished

Enjoy using Mumble

---

Congratulations. You should now be ready to enjoy a richer sound experience with Mumble.

Mumble is under continuous development, and the development team wants to focus on the features that benefit the most users. To this end, Mumble supports submitting anonymous statistics about your configuration to the developers. These statistics are essential for future development, and also make sure the features you use aren't deprecated.

☒ Submit anonymous statistics to the Mumble project

---

< Back

Finish

Cancel

## Certificate Management

### Certificate Authentication

Authenticating to servers without using passwords

Mumble can use certificates to authenticate with servers. Using certificates avoids passwords, meaning you don't need to disclose any password to the remote site. It also enables very easy user registration and a client side friends list independent of servers.

While Mumble can work without certificates, the majority of servers will expect you to have one.

Creating a new certificate automatically is sufficient for most use cases. But Mumble also supports certificates representing trust in the users ownership of an email address. These certificates are issued by third parties. For more information see our [user certificate documentation](#).

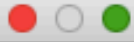
- ☒ Automatic certificate creation
- ☐ Create a new certificate
- ☐ Import a certificate

Export current certificate

< Back

Next >

Cancel



## Certificate Management

### Finish

Certificate-based authentication is ready for use

---

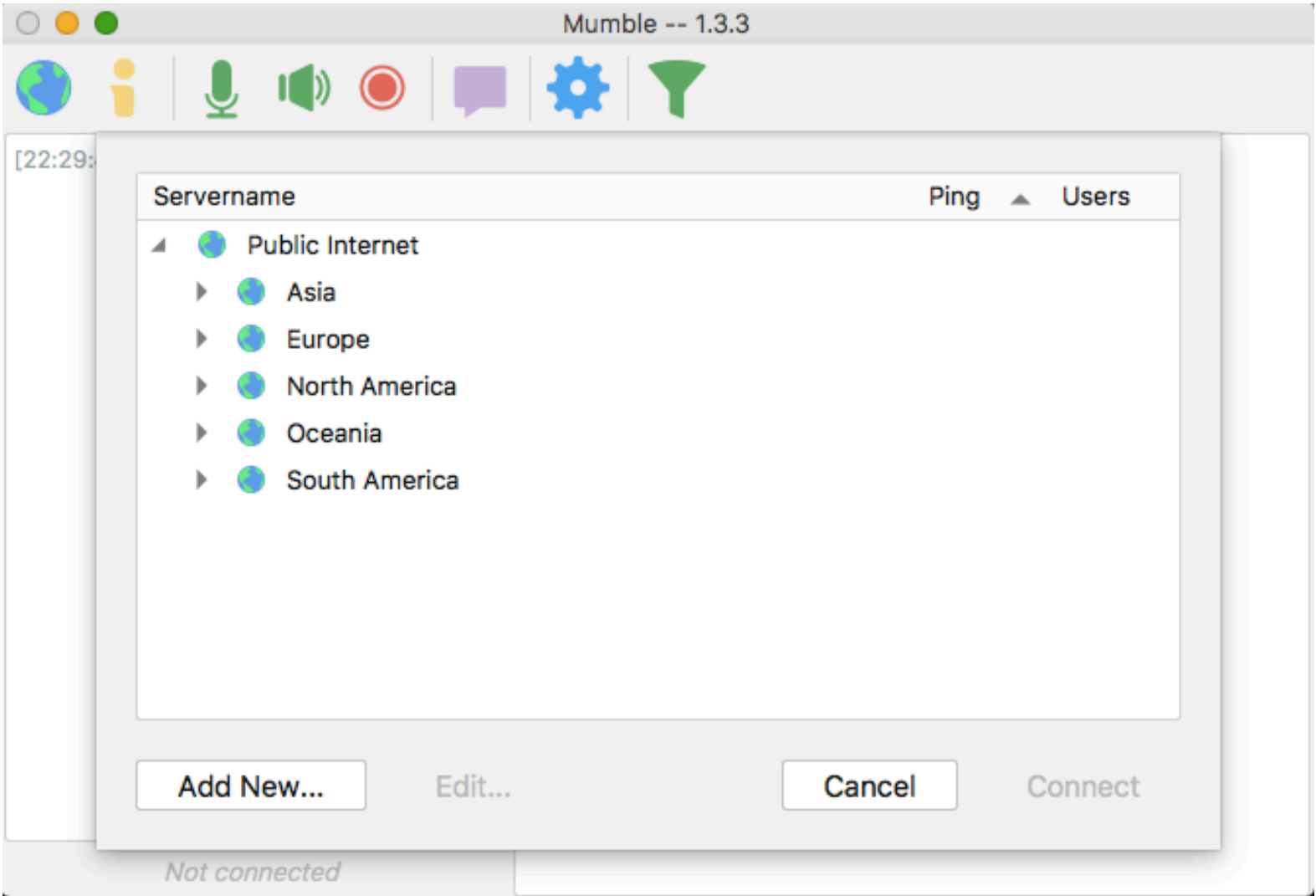
Enjoy using Mumble with strong authentication.

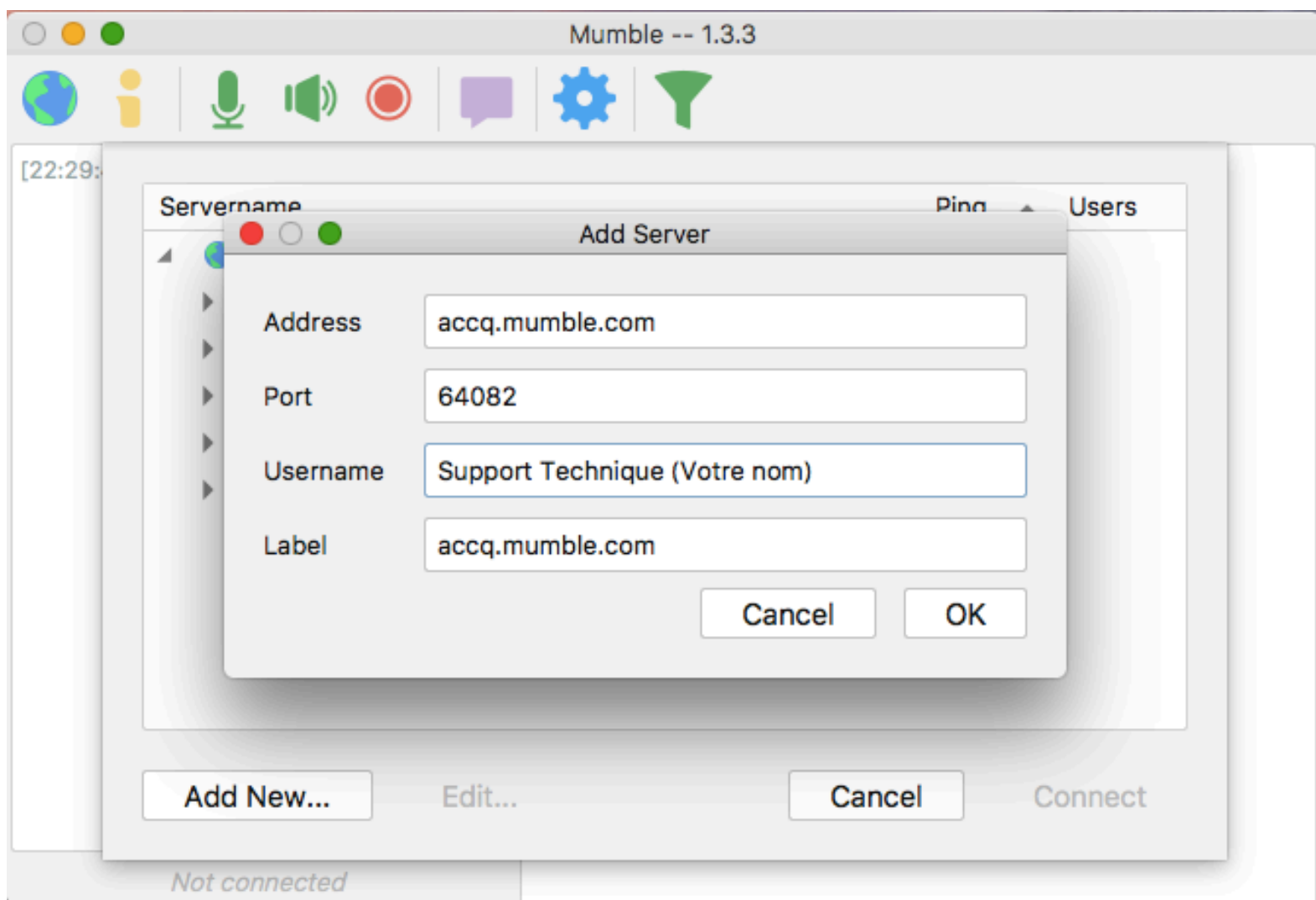
---

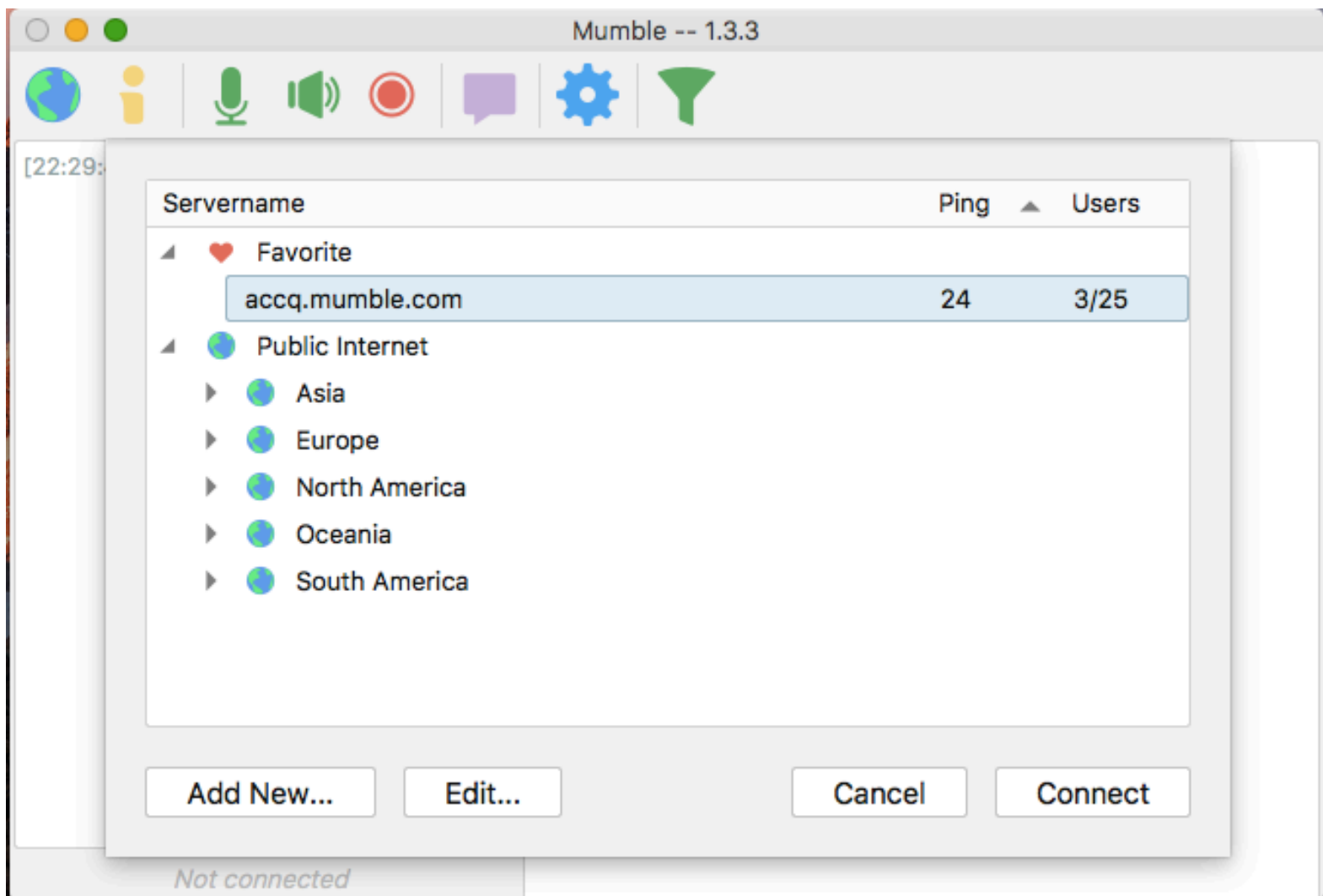
< Back

Finish

Cancel










Mumble -- 1.3.3



**Nous sommes l'Alliance pour une constituante citoyenne du Québec. ACCQ**

Nous mettons à votre disposition un outil libre et gratuit qui vous permet de discuter avec nous, ou entre vous des sujets qui vous intéressent. Avec un ordinateur, une tablette ou un téléphone intelligent un casque d'écoute, un micro et une connexion internet, vous serez en mesure de participer à votre convenance.

**Réglage pour Mumble:**  
Une fois connecté, il est primordial de régler la fonction « appuyer pour parler » (push to talk) qui est essentiel pour une discussion efficace en groupe. Elle permet d'éviter les échos des autres personnes rendant les conversations très désagréables.  
Vous n'avez qu'à suivre les étapes : <http://www.mumble.com/support/mumble-server-push-to-talk.php>

[22:47:53] Muted.

Type message to channel 'Accueil' here

A.C.C.Q.

▲ **Accueil**

06 - Béatrice Séjourné

16 - Luc DAoust

**Support Technique (Votre nom)**

▲ Alliance pour une constituante citoyenne du Québec - ACCQ

Comité CA (premier Mercredi du mois 19h)

Comité COMCOM ( Jeudi 13H)

▶ Comité RV2021 ( Lundi 19h)

Pause-Café

Comité des responsables ( dimanche 10h à 12h)

▲ Comité Militantisme ( mercredi 19h00)

Comité Militantisme ( mercredi 19h00)

Comité 11 (mardi ou mercredi 19h à 21h)

Réunion Privée

Salle 1

Salle 2

▶ Regroupements régionaux